

West-London daylight studio, lifestyle and colourama space, equipped with lighting and available to hire.

space@vmv.studio

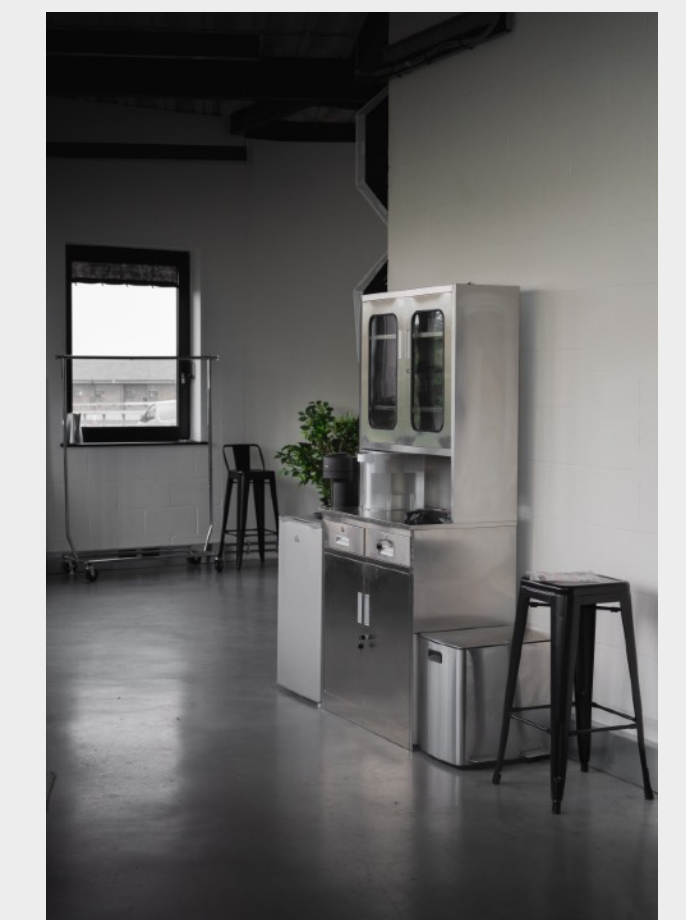
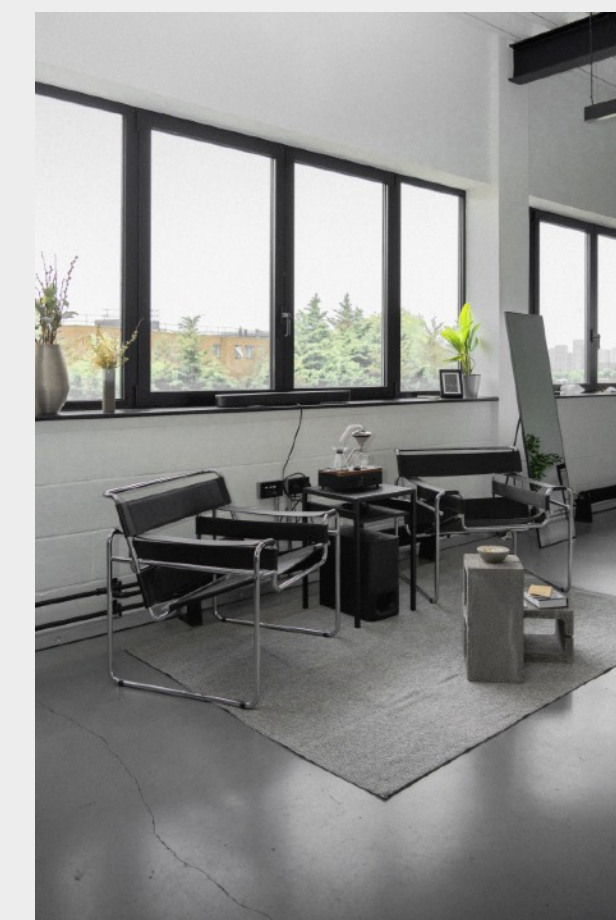
+44 788 902 1292

Welcome to our vibrant West London daylight studio! This lifestyle and colourama space is not only equipped with high-quality lighting perfect for various shoots but also serves as a functioning office for our creative team.

While the studio is available for hire, please note that a small number of our staff, including the studio manager, will be present at the opposite end of the studio, engaged in day-to-day operations. We ensure that this will not interfere with your activities. A room divider is in place to maintain privacy and minimise any distractions, allowing both our team and our clients to work efficiently and comfortably within the same environment.

For those interested in exclusive use of the entire studio space, without our team present, we invite you to inquire about availability and rates. We're more than happy to accommodate your needs for a completely private session.

To discuss your specific requirements or to book the space, please reach out to us. We look forward to hosting your next creative project!



good to know

STUDIO MANGER

Amy Caulfield

STUDIO OPERATIONS

Jay Sentrosi

STUDIO COORDINATOR

LETS CONNECT

Follow our journey and share your creative projects on Instagram by tagging us @vmv.studiospace. We love seeing your productions come to life in our space!

Your feedback is invaluable to us. Please consider leaving a review on Google, Peerspace, or Scouty to help us improve and grow. For any suggestions or comments, feel free to email us directly at space@vmv.studio. We welcome and appreciate all your insights.

BLOCK BOOKINGS

Boost your creative projects with our block booking offer. When you book five sessions at our studio, you receive a 10% discount on the total cost. This is a great opportunity for regular clients to enjoy our facilities while saving on costs.

(block bookings are subject to availability and must be used within a 3 month period.)

WIFI: Dot11-Guest



lights.

- 2 x GODOX MS300V [STROBES]
- 1 x ZHIYUN MOLUS G200 300W
- 1 x AMARAN 200X 200W
- 1 x NANLITE FORZA 60W
- 1 x SOKANI 60W

equipment.

- 1 x TRIGGER HEAD
- 4 x LIGHT STANDS
- 2 x TRIPODS
- 2 x SOFTBOXES
- 1 x REFLECTOR

backdrops.

- 3 METRES
- White cloth
- Yellow colourama
- 2.7 METRES
- Red colourama
- White colourama
- Black colourama
- 1.2 METRES
- Beige colourama
- Reflective mylar



studio amenities

- CLOTHING RAIL & HANGERS
- STEAMER
- FRIDGE & MICROWAVE
- NESPRESSO MACHINE
- MAKE UP AREA
- BLUETOOTH SPEAKER
- KETTLE , TEA & COFFEE
- FULL LENGTH MIRRORS

building amenities

The building enhances your experience with additional features such as a café for meals and refreshments, shower facilities to freshen up, and an elevator ensuring easy access throughout the building.

We are committed to accessibility; our facilities include lifts and double doors that are wheelchair-friendly, disabled toilets on the ground floor, and staff who are ready to assist to make visits seamless for disabled guests. Let us know in advance if you expect visitors with special needs, and we will make every effort to accommodate them.



areas

Colourama and Lounge Space

Included in the standard studio hire, our Colourama space is equipped for diverse photographic needs and is complemented by a stylish lounge area featuring two vintage Wassily™ chairs, which have become a favourite to use on shoots.

Office Space

Adjacent to our main studio, we offer an office space that can be hired for full studio bookings. This area is ideal for clients needing additional privacy or room for project coordination or should you need an office setting for your production. Please inquire if you wish to include this in your hire.

Photography and Videography Restrictions

Please note that photography or videography is permitted exclusively within our studio spaces. Recording or shooting elsewhere in the building is not allowed.

Access to the Studio

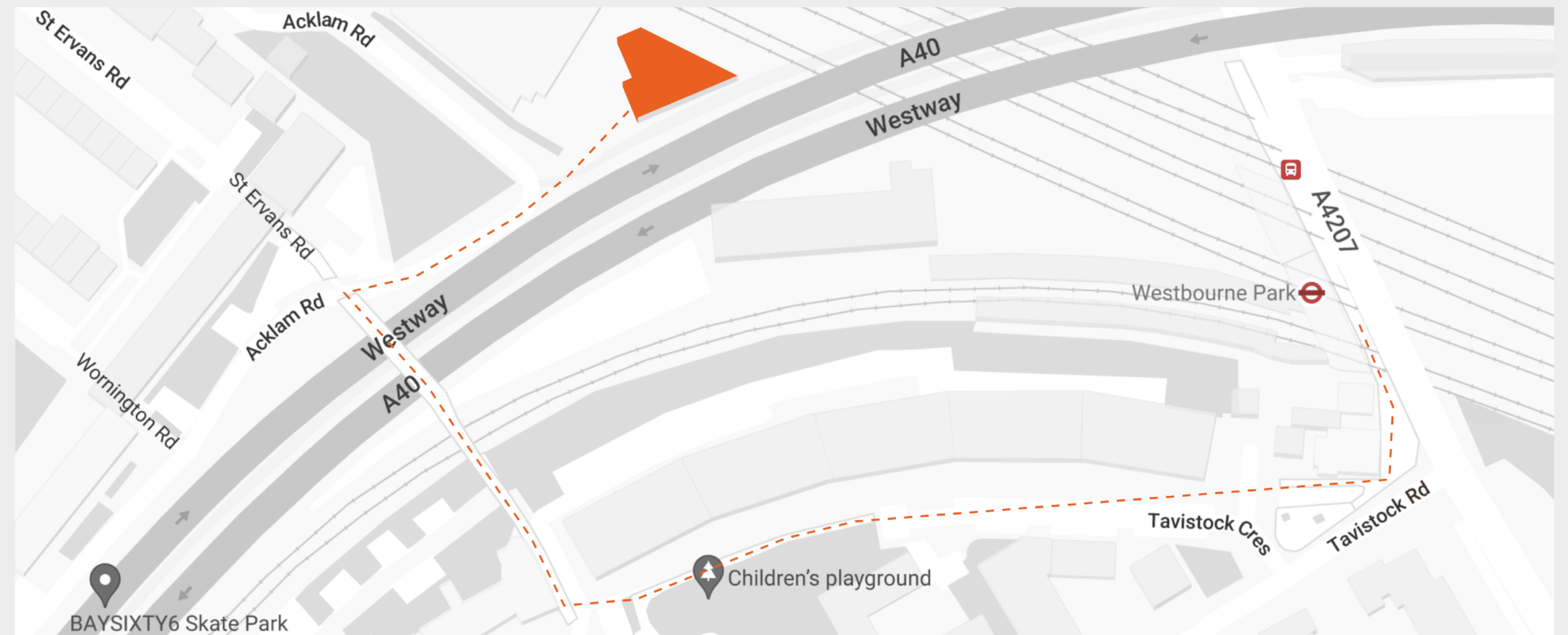
A studio personnel will always be on hand to welcome you upon arrival, ensuring a smooth start to your session and providing assistance throughout your hire.



public transport.

Our studio is based in Westbourne Studios. Westbourne Park Station, served by the Circle and Hammersmith & City lines, is the closest Underground station to Westbourne Studios, conveniently located just a short, 5-10 minute walk away.

- CIRCLE LINE
- HAMMERSMITH & CITY LINE



- Start by exiting Westbourne Park Station onto Great Western Road.
- Turn right onto Tavistock Road.
- Turn right onto Tavistock Crescent.
- Continue and turn right, and proceed across the bridge.
- Turn right onto Acklam Road and walk about 180 feet.

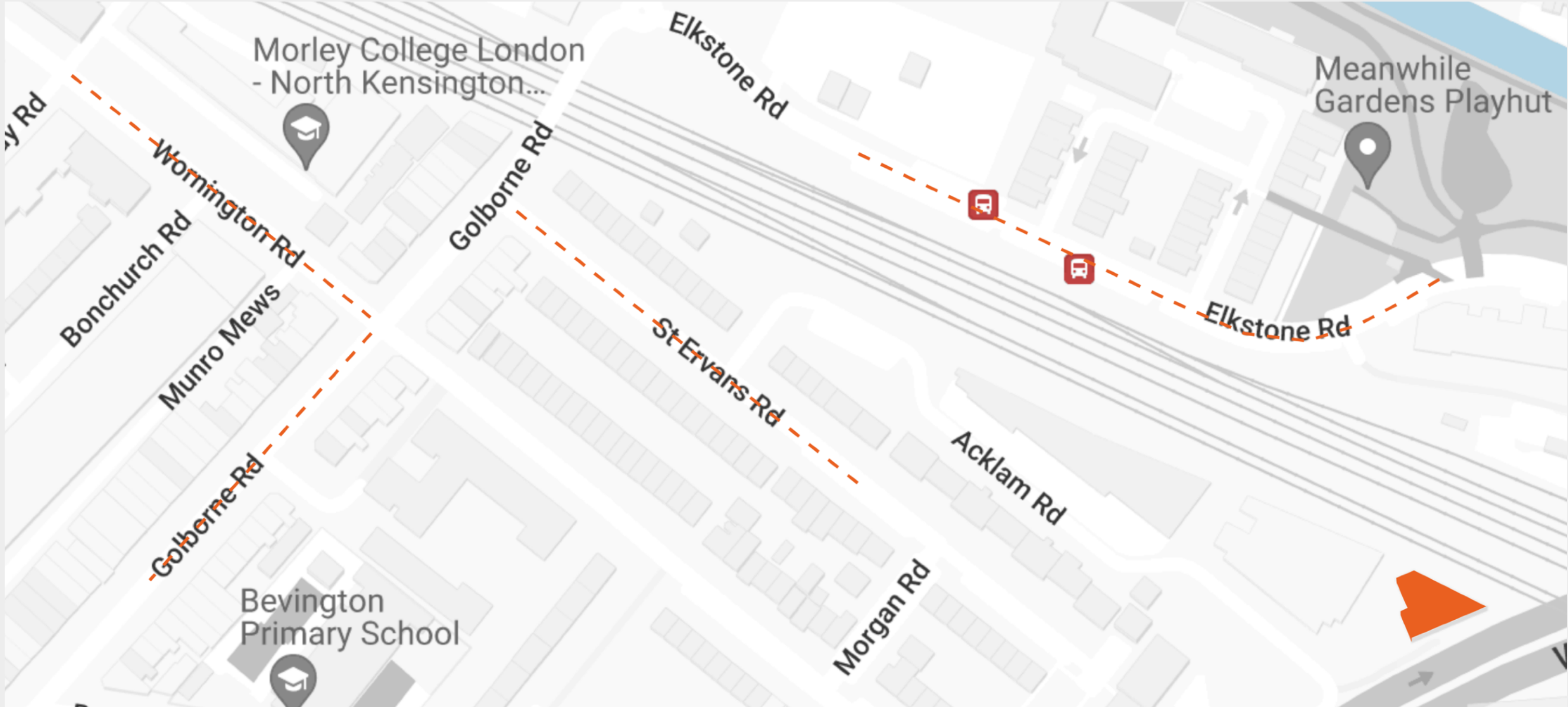
parking.

You are able to park outside the location for LOADING ONLY. If you wish to park you can do so on the streets highlighted below. This is paid street parking at £2 per hour and the maximum stay is 10 hours.

MAX STAY: 10 HOURS

local streets

- SAINT ERVANS ROAD [4 MIN]
- WARNINGTON ROAD [6 MIN]
- GOLDBORNE ROAD [6 MIN]
- ELKSTONE ROAD [9 MIN]



There is paid parking outside the premises, though spaces are limited and typically fill up by 08:30 AM on weekdays. Parking on weekends is more likely, but not guaranteed. To park, please use PaybyPhone, an easy payment method available via an app, website, or phone call. The site-specific PaybyPhone reference for Westbourne Studios is 59315. Please note, parking is at the vehicle owner's risk; VMV.STUDIO cannot accept responsibility for any loss or damage to vehicles parked on site.

local emergencies.

● VMV.STUDIO

UNIT 301
242 Acklam Road,
London, W10 5JJ

● HAMMERSMITH HOSPITAL

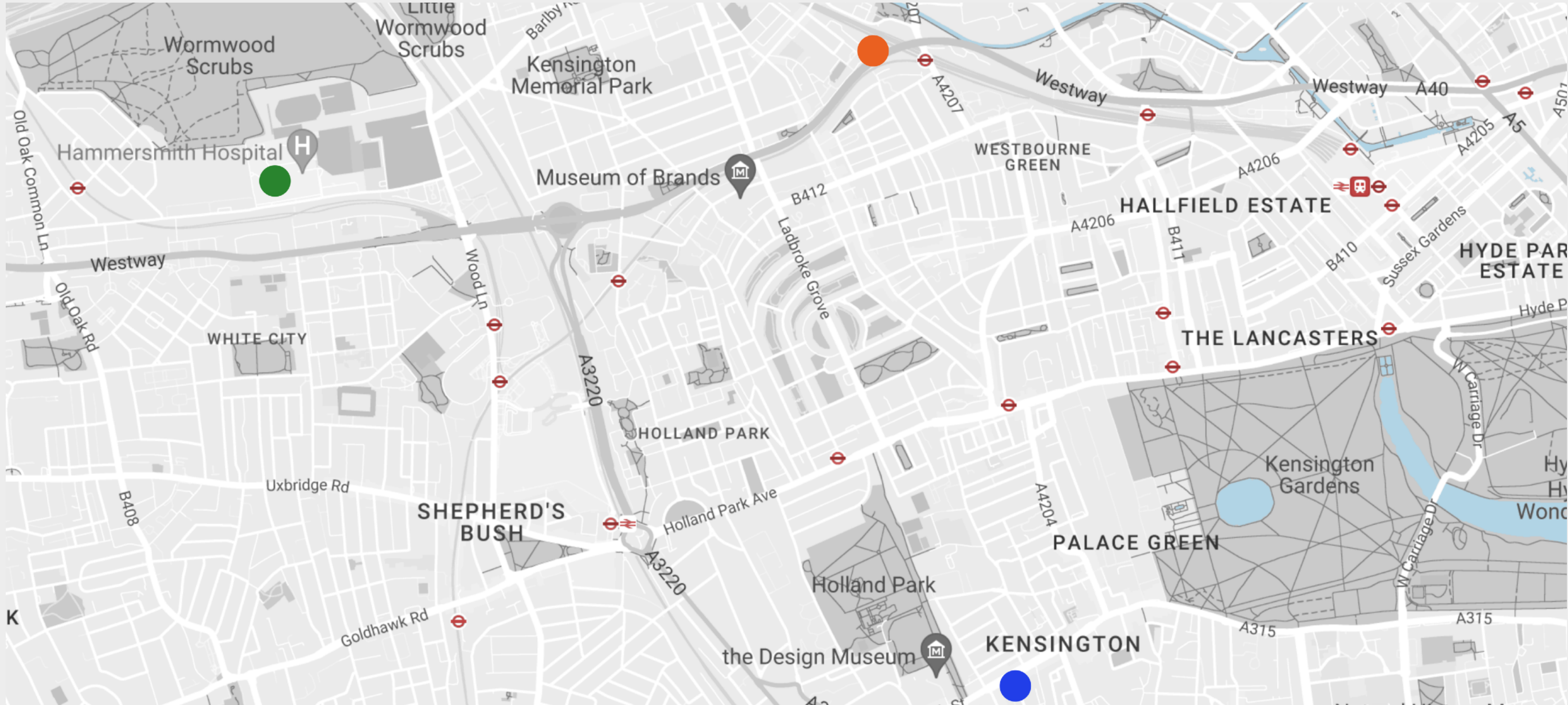
72 Du Cane Rd,
London, W12 0HS

Please call 101 in a non emergency.
Please call 999 in an emergency.
You are at Westbourne Studios in Portobello.

● KENSINGTON POLICE STATION

72-74 Earls Court Road
London, W8 6EQ

Please call 101 in a non emergency.
Please call 999 in an emergency.



MY PHARMACY LTD

10 North Pole Road,
London W10 6QL

020 89691465

THE THOBANI CHEMIST

106 Golborne Road,
London W10 5PS

020 89698741

SAINSBURY'S SUPERMARKET

2 Canal Way, Ladbroke
Grove, London W10 5AA

020 89604324

booking & conduct essentials

CANCELLATION POLICY

Notice Period: Clients must provide a notice of cancellation at least 48 hours prior to the scheduled booking time to avoid charges.

Late Cancellations: Cancellations made less than 48 hours before the booked time will incur a charge equivalent to 50% of the booked session fee.

No Shows: Failure to arrive for a booked session without prior notice will result in a charge of the full session fee.

CODE OF CONDUCT

Respect for Property:

Clients and their guests are expected to treat all studio equipment and furnishings with care. Any damage caused may result in additional charges.

Professional Behaviour:

We maintain a professional working environment and expect the same from all who use our space. Disruptive behaviour may lead to termination of the session and future booking restrictions.

Safety First:

All studio users must follow safety guidelines and instructions provided by studio personnel to ensure a safe working environment for everyone.

STUDIO CARE

Booking Time: Your booking includes setup and pack-down within the scheduled time. If your session extends beyond the booked slot, an additional hourly charge will apply. For extra time before or after your booking, please contact the booking coordinator. Remember to allocate the last 20 minutes of your session for tidying up.

Equipment and Props: You are welcome to rearrange studio props and furniture as needed. However, please return all items to their original positions at the end of your booking and handle them with care. Taking photos to remember the setup is encouraged.

Studio Condition: We ask that you leave the studio in the same or better condition than when you arrived. This includes washing any used cups and mugs.

Tape Restrictions: Avoid using gaffer tape or any other types of tape on studio surfaces. Charges will be applied for any damage caused to the walls or other surfaces.